

PHILIPS HUE

HUE SYSTEM FUNCTIONS

OPERATE ON BUTTONS

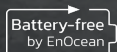
All four switching points can be individually configured with light control functions via the Hue app.



BATTERY-FREE

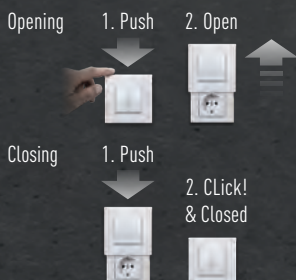
RADIO TECHNOLOGY

Each keystroke generates the radio transmission to the Hue system energy - without any batteries.

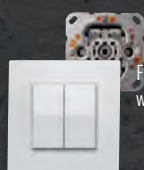


PUSH TO OPEN

The Hidden Socket | Versteckdose® with push-to-open opening support for the movable radio switch.



Friends of Hue Switch with mounting frame



Friends of Hue switch with cover frame



Friends of Hue Switch with connecting frame

PAGE 1



Friends of Hue switch with Hidden Socket | Versteckdose® for plug type F



Friends of Hue switch with Hidden Socket | Versteckdose® for plug type J



Friends of Hue switch with Hidden Socket | Versteckdose® for plug type E



Friends of Hue switch with Hidden Socket | Versteckdose® for plug type G



PAGE 2



DIE VERSTECKDOSE®

SPECIFICATIONS

Friends of Hue switch

Power supply: battery-free, with integrated energy converter
 Frequency band: 2,400 to 2,483.5 MHz
 Radio range: 100 m free field, 15-30 m indoor
 Radio standard: Zigbee Light-Link, IEEE 802.15.4
 Functionality: 4 configurable switching points
 Lifetime: 50,000 clicks
 Commissioning: with app (Android / iOS)
 System size: max. 25 FoH switches per Hue Bridge

Frame

Material: plastic, alpine white glossy
 (RAL9010)



OPERATE PHILIPS HUE AT BUTTONS

Configuring button functions

The four switching points are configured on a mobile device using the Casambi app (from V 3.2). The Casambi app is available for download free of charge for Android or iOS.

Controlling Hue lamps

The Friends of Hue switch of the Hidden Socket | Versteckdose® controls lamps of the Philips Hue lighting system via the Hue Bridge (V2).

- On/Off Switching
- Dimming
- Colour change
- Calling up light scenes



FRIENDS OF HUE RADIO SWITCH

WITH MOUNTING FRAME

Mounting on a flush-mounted box - in addition to simple adhesive mounting on suitable ground, also for screw mounting on a flush-mounted box, after removing a wired switch.

Simply a good switch with a flat wall mounting frame, for all applications where the combination with a socket is not important. The big advantage with this Friends of Hue wireless switch is its free placement. Because no matter where you need a place to switch, this switch can be placed anywhere with adhesive.

WITH COVER FRAME

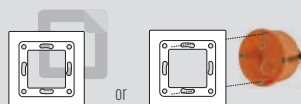
Surface mounting over an existing switch - without interfering with the electrical installation.

This switch with a mounting frame can be installed over an existing wired switch without having to intervene in the electrical installation. Only the plastic frame and the rocker elements of the existing switch are removed and only the switch insert is left in the flush-mounted box. This can then simply be covered with the cover frame and the radio switch. In this way, a Friends of Hue lamp can be switched and additionally controlled at the same switching location as before, without the need for an electrician for the conversion.

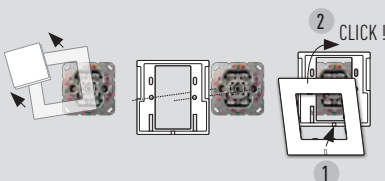
WITH CONNECTING FRAME

Mounting of a second switch below the Hidden Socket | Versteckdose® - as a switch with connecting frame to cover another flush-mounted box

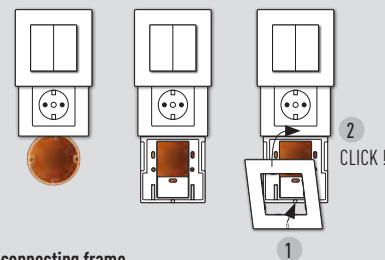
If a Hidden Socket | Versteckdose® is mounted on two flush-mounted boxes, this connecting frame with a Friends of Hue radio switch is used to cover the second flush-mounted box and to install a second radio switch. The connecting frame is precisely aligned and connected to the Hidden Socket | Versteckdose® by means of a plug-in connection. This makes it possible to convert a switch-socket installation, for example, to two Friends of Hue wireless switches arranged one below the other and a socket.



with mounting frame



with mounting frame

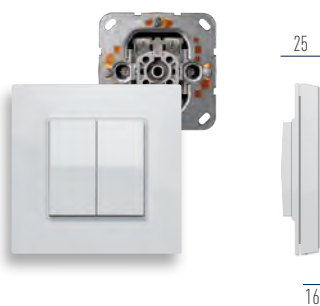
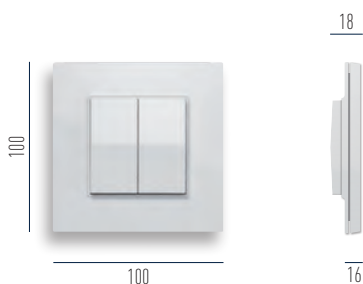


with connecting frame

Item no. RS07-01000000
 Switch with mounting frame

Item no. RS09-01000000
 Switch with mounting frame

Item no. RS10-01000000
 Switch with connecting frame



HIDDEN SOCKET | VERSTECKDOSE® – RETROFITTING AN EXISTING LIGHT SWITCH

Retrofit: Conversion of an existing light switch to a socket outlet

In order to be able to use the cables of an existing light switch for retrofitting an additional socket outlet, these two installation requirements must be met at the light switch to be replaced:

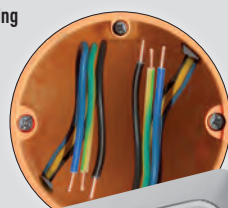
1. a flush-mounted socket with a depth of at least 47 mm
2. a form of wiring that is suitable for a protective contact socket.

1. flush-mounted box with min. 47 mm depth

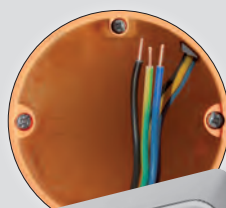


2. types of wiring

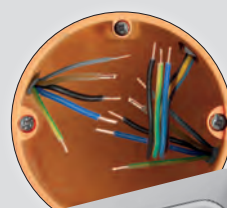
suitable



2 CABLES EACH WITH 3 - 5 WIRES
– CAN BE RETROFITTED
DIRECTLY!

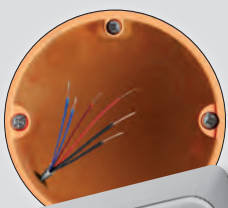


1 CABLE WITH 3 - 5 WIRES
– CAN BE RETROFITTED
WITH SMALL ADAPTATIONS.



> 2 CABLES EACH WITH 3 - 5 WIRES
– CAN BE RETROFITTED.
HOW? ASK YOUR ELECTRICIAN!

not suitable



DOORBELL WIRE INSTEAD OF POWER
CABLE – NOT SUITABLE FOR 230 V!



POWER CABLE WITH 2 WIRES –
PROTECTIVE CONDUCTOR MISSING!



Please note:
The installation requires
a qualified electrician!

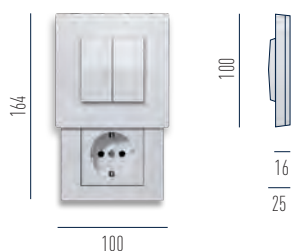
Find further informations on
installation requirements on:
www.hiddensocket.com/support

HIDDEN SOCKET | VERSTECKDOSE® WITH FRIENDS OF HUE RADIO SWITCH

HIDDEN SOCKET | VERSTECKDOSE® FOR PLUG TYPE F (DE)

Connected load: 220 - 250 V AC, 50 - 60 Hz, 16 A, Contact hazard protection: integrated intervention protection, Housing: plastic, alpine white (RAL9010) glossy, from AS series (Jung), Mounting: in flush-mounted box, Conforms to standard: DIN 49073 (60 mm opening, 46 mm depth), Degree of protection: IP20, for indoor use, Plug type: type F, with double earthing, Certificates: CE, RoHS, VDE0620-1, EN60950-1

Item no. VS02-01010000
Socket insert for plug type F (DE)



HIDDEN SOCKET | VERSTECKDOSE® FOR PLUG TYPE J (CH)

Connected load: 250 V AC, 50 - 60 Hz, 10 A, Contact hazard protection: integrated increased contact hazard protection, Enclosure: plastic, alpine white (RAL9010) glossy, from AS series (Fa. Jung), mounting: in device box according to DIN 49073, complete with support ring, for screw mounting (not suitable for mounting in surface-mounted caps), with spring terminals for conductors up to 2.5 qmm, conformity to standards: SEV 1011-1998/IEC 884-1, degree of protection: IP20, for indoor use, plug type: for type J, T13 with double earthing

Item no. VS02-01040000
Socket insert for plug type J (CH)



HIDDEN SOCKET | VERSTECKDOSE® FOR PLUG TYPE E (FR / BE)

Connected load: 250 V AC, 50 - 60 Hz, 16 A Degree of protection: IP20, for indoor use, Contact hazard protection: integrated increased contact hazard protection, Housing: plastic, alpine white (RAL9010) glossy, from series AS (Fa. Jung), Mounting: with spring terminals for rigid untreated flexible conductors up to 2.5 qmm, Conforms to standard: CEE-Publ. 7, Normblatt V, Plug type: type E, 2-pole with earth pin

Item no. VS02-01050000
Socket insert for plug type E (F / BE)



HIDDEN SOCKET | VERSTECKDOSE® FOR PLUG TYPE G (GB)

Connected load: 250 V AC, 50 - 60 Hz, 13 A, Contact hazard protection: integrated increased contact hazard protection, Housing: plastic, alpine white (RAL9010) glossy, from Series AS (Jung), Mounting: with screw terminals for rigid and flexible conductors up to 4 qmm acc. to BS 1363-1, Conforms to standard: British Standard 1363, Degree of protection: IP20, for indoor use, Plug type: type G, 2-pole with earth pin

Item no. VS02-01060000
Socket insert for plug type G (GB)



Service

Tel. +49 (0) 4194 9881150 (free of charge from a German landline)
Mail info@hiddensocket.com
Shop www.hiddensocket.com

TCS TürControlSysteme AG
Geschwister-Scholl-Str. 7
D-39307 Genthin
Germany

The Hidden Socket | Versteckdose®
is a trademark of TCS AG.
Patented under EPA no. 3079209

Hue, Friends of Hue, and all related logos are trademarks
of Signify Holding. Philips is a trademark of Koninklijke
Philips N.V.